

# Project reporting

This is helpful for externally funded projects that are required to provide evidence of results achieved by the project.

The reports are broken into sections, Trap reports, Bait station reports, and Monitoring reports

Links to these reports can be found under the **reports** heading on your project page and can be generated using a variety of filters to show the data wanted.

The most commonly used are:

[Trap records with map](#) View/Download trap records. Optionally filter by date, species caught, etc

Heatmaps are available via the layer switcher (top right of the map)

Line: gully, ridge, track

From / to: Start date: 28 Jun 2022, End date: 28 Jul 2022

Species: None, Unspecified, Other, Bird, Canadian geese, Cat, Deer, Dog, Ferret

Trap type: A12, A24, AT220, BT 200, Belsie, Blitz, Cage Trap, Chimney, Coni

Initial bait: Lumpy/unsettled mutton, Dried fruit, Ferret bedding, Fish, Fresh Possum, Fresh Rabbit, Fresh fruit, Fresh meat, Golf ball

Status: Initial set, Removed for Repair, Sprung, Trap Replaced, Soil set, bait OK, Soil set, bait missing, Soil set, bait bad, Trap gone, Trap interfered with

Tags:

Trap sub type:

Records per page: 20

Apply Reset

trap.n12

[Multi-project trap records](#) Report traps across multiple projects

Project Type: rural

Project: Demo Project, Waihoanga demo, Waihoanga koha, demo, test demo, test demo

From / to: Start date: 28 Jun 2022, End date: 28 Jul 2022

Line: gully, ridge

Species: None, Unspecified, Other, Bird, Canadian geese, Cat, Deer, Dog, Ferret

Trap type: A12, A24, AT220, BT 200, Belsie, Blitz, Cage Trap, Chimney, Coni

Initial bait: Carrot, Cereal, Cheese, Chocolate, Dehydrated Rabbit, Dried fruit, Ferret bedding, Fish

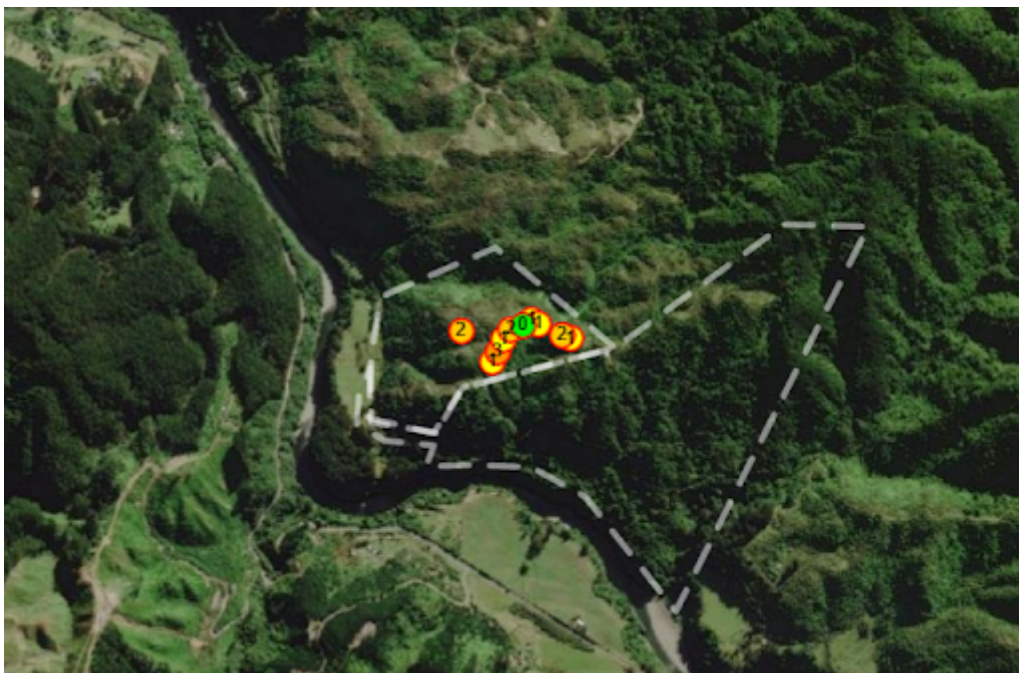
Items per page: 20

Apply Reset

Select any filter and click on Apply to see results

Project	Line	Code	Trap type	Date	Status	Recorded by	Initial bait	Rebaited	Bait type	Strikes	Species caught	Maturity	Trap condition	Note
Waihoanga demo	ridge	T009	AT220	22 Jul 2022 - 08:59	Sprung	Lenore Winterburn	None	No	None	1	Stoat	Adult	Needs maintenance	
Waihoanga demo	ridge	tr12	Timms	20 Jul 2022 - 08:27	Still set, bait bad	Lenore Winterburn	Cheese	Yes	Dehydrated Rabbit	0	None	Adult	OK	
Waihoanga demo	ridge	tr11	Timms	20 Jul 2022 - 08:26	Sprung	Lenore Winterburn	Cheese	Yes	Dehydrated Rabbit	1	Rat	Adult	OK	
Waihoanga demo	ridge	R002 / R002 supplementary	DOC 200	20 Jul 2022 - 08:25	Still set, bait bad	Lenore Winterburn	Dehydrated Rabbit	Yes	None	0	None	Adult	OK	

Or [Multi-project trap records \(with map\)](#) This shows a difference between projects in a visual way. Allowing the users to see what each project is achieving.



## Traps last checked

This shows the date the installations were last serviced. This helps ensure they do not fall outside of their default maintenance period.

## Line traps last checked

The report shows the date each line was last checked. It takes the date from the most recent record across all the traps in each line. Use the [Trap date last checked](#) to see the date individual trap were checked.

Line	Date last checked	Traps
gully	2022-07-04 12:00	4
ridge	2022-07-22 08:59	8
track	2021-12-19 00:00	8

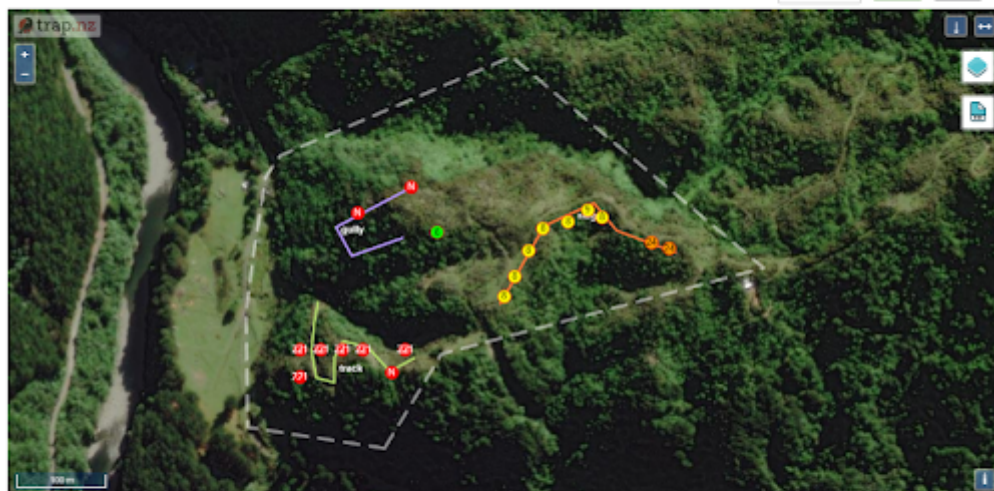
## Trap date last checked with map

## Trap date last checked

Map shows the number of days since trap was last checked. "N" for never.

Line:  Trap type:  Trap sub type:  Retired:  Start Date:  End Date:  Tags:

Items per page:



Code	Trap type	Line	Tags	Last checked	Days ago
double trap	DOC 200	gully		Never checked	
T010	AT220	gully		Never checked	
tr027	DOC 200	track		Never checked	
T009	AT220	ridge		22 Jul 2022 - 08:59	6
tr12	Timma	ridge		20 Jul 2022 - 08:27	8
tr11	Timma	ridge		20 Jul 2022 - 08:26	8
R002	DOC 200	ridge	test	20 Jul 2022 - 08:25	8
R003	DOC 200	ridge	test	20 Jul 2022 - 08:25	8
R004	Unconifer	ridge	test	20 Jul 2022 - 08:24	8

## Multi-project Line date last checked



### Line date last checked

The report shows the date each line was last checked. It takes the date from the most recent record across all the traps in each line. Use the [Trap date last checked](#) to see the date individual trap were checked.

Project Type:  Project:

Project:

Project	Trap line	Date
Demo Project	Park traps	2022-06-16 08:44
Demo Project	W. Scientific Lh	2022-05-23 12:48
Demo Project	Central circuit	2022-06-14 13:26
Demo Project	Northern circuit	2022-06-16 09:17
Demo Project	[no line]	2022-06-03 11:01
Waihoanga demo	ridge	2022-07-22 08:59
Waihoanga demo	gully	2022-07-04 12:00
Waihoanga demo	track	2021-12-19 00:00

**Corrected catch rate** The corrected trap catch rate is expressed as the catches per 100 trap nights. Trap nights are the number of nights the trap is set for over the period selected. However, when a trap is sprung the trap is assumed to be available for only half the nights from the previous trap record date

## Corrected catch rate

Corrected trap catch rate is expressed as the catches per 100 trap nights. Trap nights is the number of nights the trap is set for over the period selected. However, when a trap is sprung the trap is assumed to be available for only half the nights from the previous trap record date.

Trap ID:

Line:

Date:

Species caught:

Code	Line	Trap Nights	Catch strikes	Catches per 100 nights
Total:		172	18	10.47
R 005	ridge	21	2	9.52
R001	ridge	20.5	3	14.63
R002	ridge	48.5	3	6.19
R003	ridge	33	2	6.06
R004	ridge	33	2	6.06
T009	ridge	14	2	14.29
Tr11	ridge	1	1	100.00
Tr12	ridge	1	0	0.00
Tdb1 001	gully	0	1	
Tdb1002	gully	0	2	

Needing to know the amount of **hours taken to service the project**? Select tracks when in the App and record your tracks after which you access the projects page on the website, select **Reports - Project reports**

Select a displayed **track** the time spent checking the installations will show here

# 2022-07-29

View

Edit

**Start:** Friday, July 29, 2022 - 10:55

**End:** Friday, July 29, 2022 - 10:55

**Line:** ridge

**Project record type:** Track

Trap Condition Shows traps across projects that have a condition set e.g. needs maintenance- now includes trap gone



## Trap condition

Project

Demo Project  
Predator Free Whiriwhiri  
WJ4N Otaraua Park  
Waihoanga koha  
braddicks  
demo 1  
demo 2  
demonstration project

Project Type

predator free franklin  
north west waikato  
rural

Line

Ridge line  
gorge road  
gully  
track  
tree line  
trial line

Trap type

A12  
A24  
AT220  
BT 200  
BT 250  
Belisle  
Blitz  
Cage Trap  
Chimney

Status

Initial set  
Removed for Repair  
Sprung  
Trap Replaced  
Still set, bait OK  
Still set, bait missing  
Still set, bait bad  
Trap gone  
Trap interfered with

Trap condition

OK  
Needs maintenance  
Repaired  
Regassed  
Relured  
Battery charge  
Disabled

Apply

Reset

Project	Code	Trap line	Date installed	Trap type	Record date	Trap condition	Status
demo 1	Mai003	Ridge line	2022-08-26	DOC 200	2023-01-10	OK	Trap gone
demo 1	R001 (retired)	Ridge line	2022-06-16	DOC 200	2023-01-10	Needs maintenance	Trap gone

This can also be downloaded as a csv file

Revision #3

Created 19 August 2022 03:48:52 by Lenore Winterburn

Updated 9 January 2023 22:47:15 by Lenore Winterburn