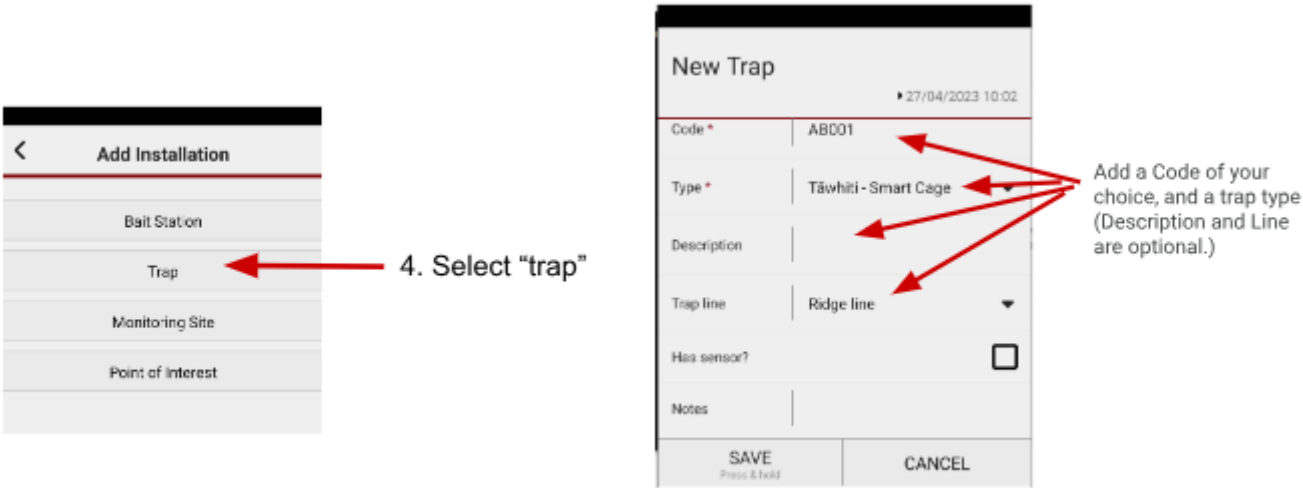
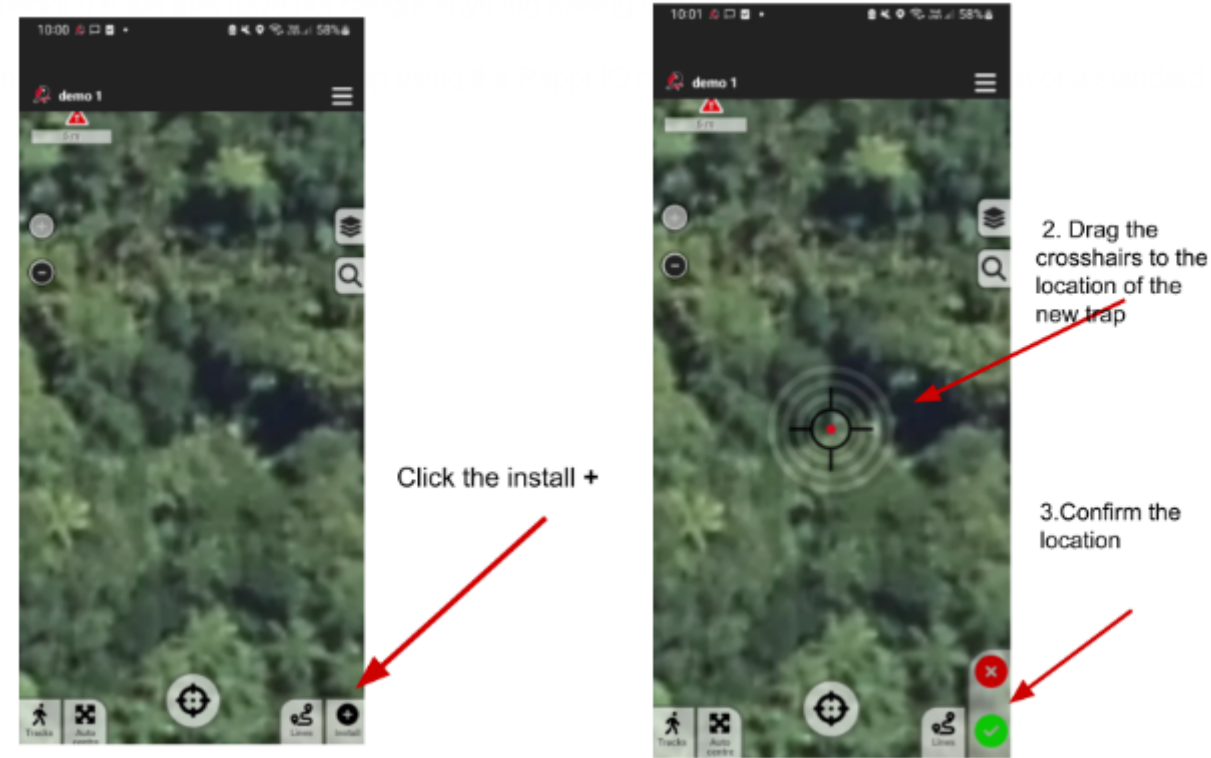


Installing sensor traps

Sensor traps allow the trapper to service the traps when they have been sprung. This removes the time spent

p.



To add a sensor trap, you must tick the check box and add the sensor provider and sensor ID.

27/04/2023 10:02

How many?

Sensor provider XXXX

Sensor id XXXX

Notes

Contact

SAVE Press & hold CANCEL

Tick the check box to add a sensor

Add the sensor provider and sensor ID

27/04/2023 10:02

Contact

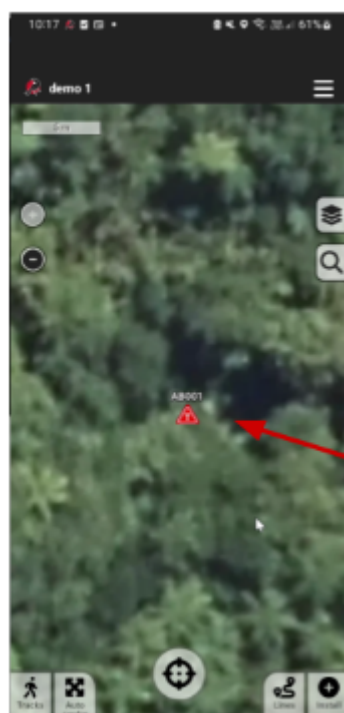
Name

Address

Email

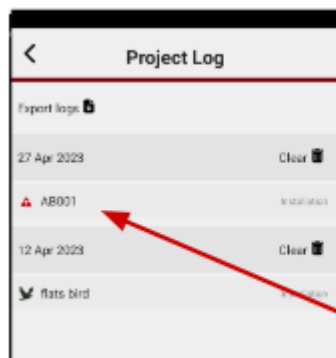
Phone

SAVE Press & hold CANCEL



Your trap will display on the map as a standard trap

Access the Menu, Logs and click on the installation you have just added to ensure the trap shows as a sensor trap



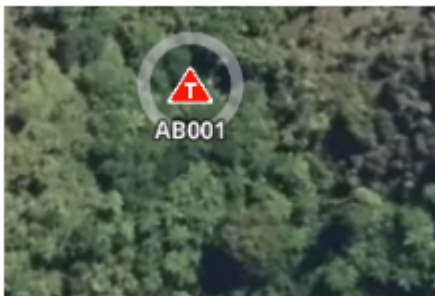
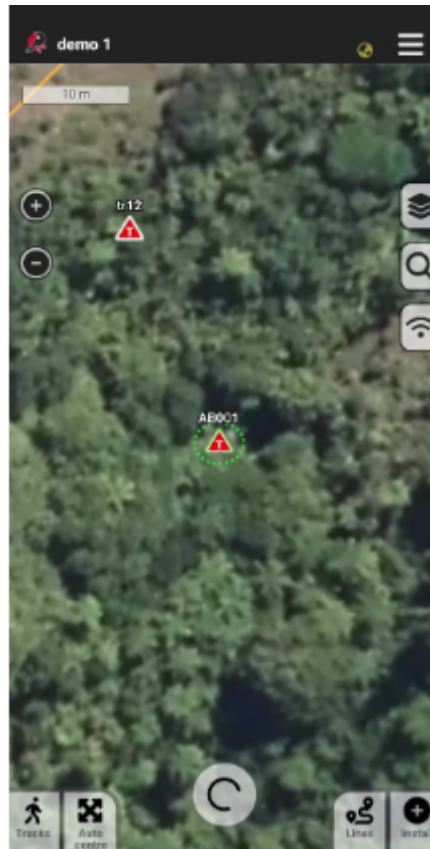
This will appear with a grey ring upon saving

Date	27 Apr 2023 10:02
Installer	Lenore Winterburn
Type	Tāwhiti - Smart Cage
Coords	-40.83530, 175.22167
Description	
Line	Ridge line
Notes	
Sensor provider	wheronet
Sensor ID	1340
Name	
Address	
Email	
Phone	
View Online	
Remove Log Entry <small>Press & Hold</small>	

The trap will show as being added as a sensor trap

Trigger the trap a number of times to push a sensor message through the system. When mobile data reception is available, synchronise the app and ensure the sensor status has been updated (green or red.) If the status has not changed, double check the sensor details are correct, and sensor network coverage is available in the trapping area.

Trap Status *	Still set, bait OK	▼
Condition *	OK	▼
Re-lured	<input type="checkbox"/>	
Lure notes		
Notes		
Coords: 40.83530, 175.22168		
Enable advanced record fields <input type="checkbox"/>		
View Online		
Move location		
Retire		
SAVE <small>Press & hold</small>		CLOSE



The following error indicates the sensor is currently assigned to another trap in Rappt.IO. To continue, the sensor needs to be removed from that trap. This might require a project administrator to locate and make the required changes

- Another active installation (XXXX) with the same ID and provider already exists.

Revision #2

Created 7 June 2023 21:26:40 by Lenore Winterburn

Updated 9 July 2024 01:38:30 by Cosmos