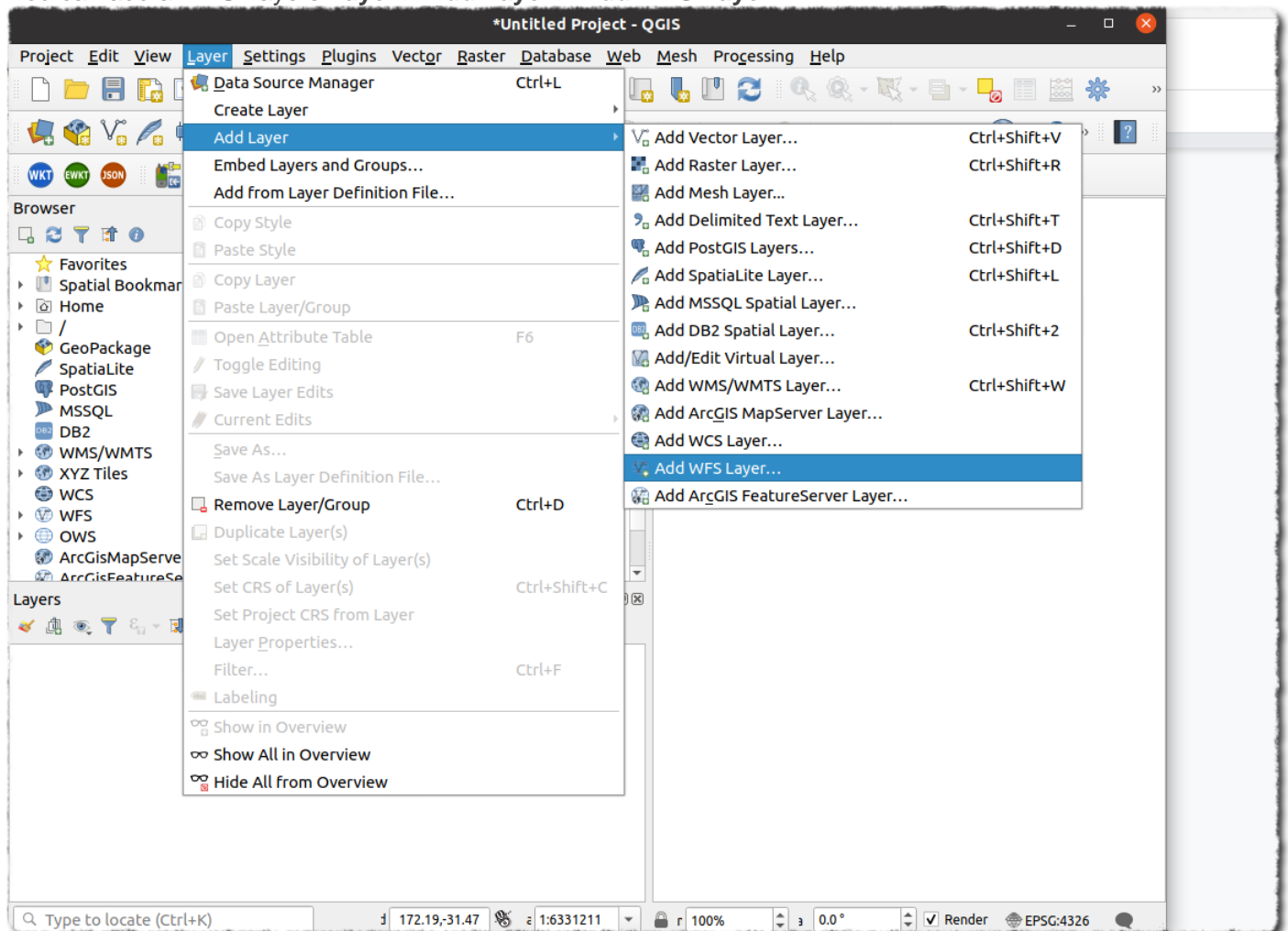


# Accessing the Rappt.io map feeds with QGIS

## Accessing layers

You can add a WFS Layers **Layer > Add Layer > Add WFS Layer**



Create a new Server Connection and enter the WFS URL in the format [described here](#)

[https://io.rappt.io/geo/trapnz-projects/wfs/apikey/project\\_id](https://io.rappt.io/geo/trapnz-projects/wfs/apikey/project_id)

The WFS server is set to return a maximum of 10k features per request. If you have more than this number of features you must enable paging and set a page size less than 10,000. We recommend 5000.

## Connection Details

Name

URL

## Authentication

Configurations

Basic

Choose or create an authentication configuration

No authentication ▾



Configurations store encrypted credentials in the QGIS authentication database.

## WFS Options

Version

Maximum ▾

Detect

Max. number of features

☒ Enable feature paging

Page size

5000

☐ Ignore axis orientation (WFS 1.1/WFS 2.0)

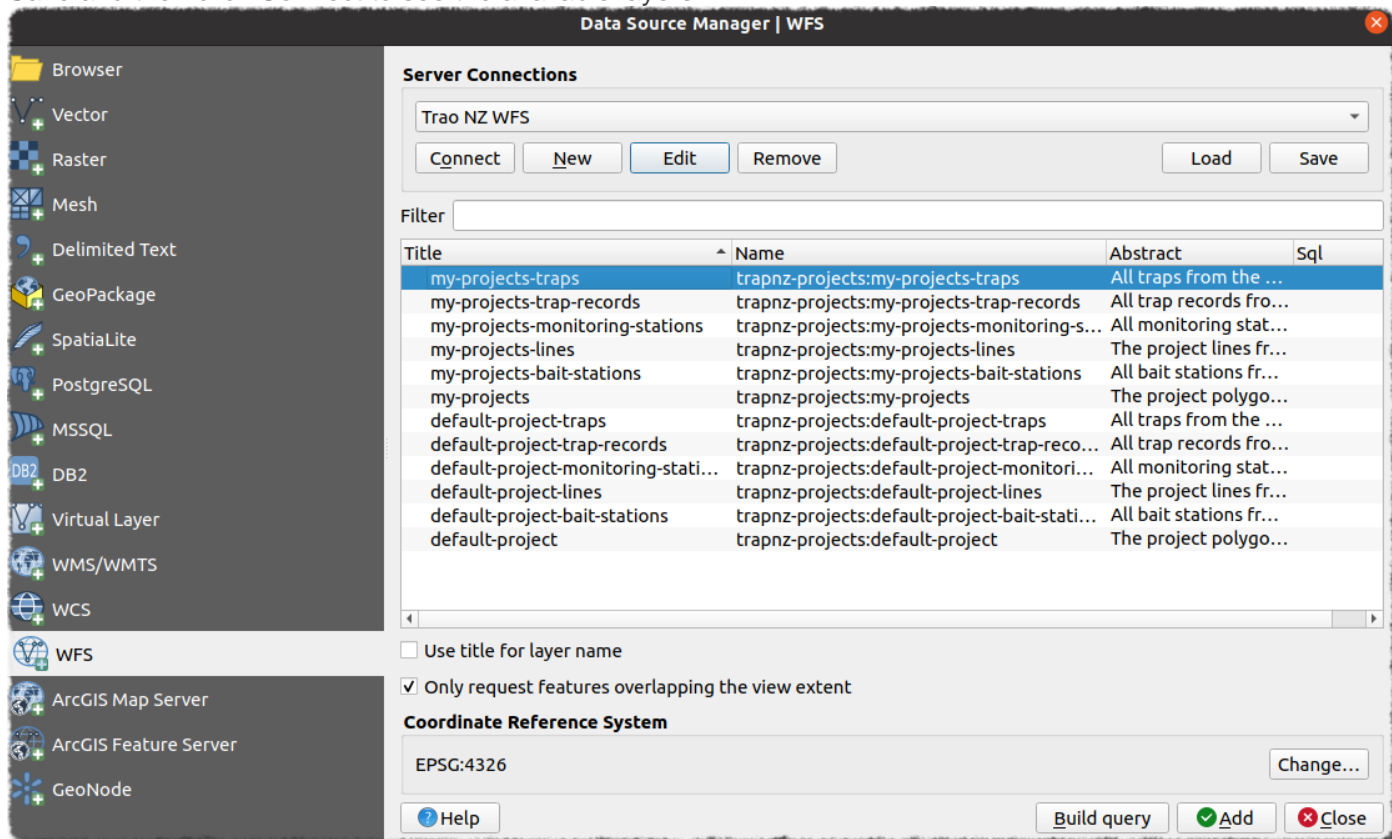
☐ Invert axis orientation

Help

Cancel

OK

Save and then click Connect to see the available layers:



You can then add individual or groups of layers to the map.

## Filtering records

You can add a CQL filter to a WFS connection to filter features from the WFS server. This can greatly reduce the amount of data retrieved (speeding up the transfer and improving performance).

For example - if you are only interested in this year's records, you could add a CQL filter to build the query as a filter *before* loading the layer from the server.

1. Connect to the server as above to see the list of available layers.
2. Select the layer you want to query (e.g. default-project-trap-records) and click the Build query button

3. In the dialog that appears, enter the following `SELECT * FROM "default-project-trap-records" WHERE record_date > '2021-01-01'` (or whatever date you wish to use)

**SQL Query Composer**

SQL Statement: `SELECT * FROM "default-project-trap-records" WHERE record_date > '2021-01-01'`

Columns: \*

Table(s): "default-project-trap-records"

Joins:

Joint layer	ON condition

Where: `record_date > '2021-01-01'`

Order by:

Buttons: Help, Reset, Cancel, OK

4. Press OK. The expression used will appear as the Sql value of the target layer:

**Server Connections**

Trap NZ WFS

Buttons: Connect, New, Edit, Remove, Load, Save

Filter:

Title	Name	Abstract	Sql
my-projects-traps	trapnz-projects:my-projects-traps	All traps from the ...	
my-projects-trap-records	trapnz-projects:my-projects-trap-records	All trap records fro...	
my-projects-monitoring-stations	trapnz-projects:my-projects-monitoring-s...	All monitoring stat...	
my-projects-lines	trapnz-projects:my-projects-lines	The project lines fr...	
my-projects-bait-stations	trapnz-projects:my-projects-bait-stations	All bait stations fr...	
my-projects	trapnz-projects:my-projects	The project polygo...	
default-project-traps	trapnz-projects:default-project-traps	All traps from the ...	
default-project-trap-records	trapnz-projects:default-project-trap-reco...	All trap records fro...	<code>SELECT * FROM "default-project-trap-records" WHERE record_date &gt; '2021-01-01'</code>
default-project-monitoring-stati...	trapnz-projects:default-project-monitori...	All monitoring stat...	
default-project-lines	trapnz-projects:default-project-lines	The project lines fr...	
default-project-bait-stations	trapnz-projects:default-project-bait-stati...	All bait stations fr...	
default-project	trapnz-projects:default-project	The project polygo...	

☐ Use title for layer name

☒ Only request features overlapping the view extent

**Coordinate Reference System**

EPSG:4326

Buttons: Help, Build query, Add, Close, Change...

When you add the layer now, only the filtered records (features) will be loaded.

---

Revision #2

Created 15 December 2021 23:19:46 by Daniel Bar-Even

Updated 8 July 2024 02:12:18 by Cosmos